



# The U.S. Drought Portal

Improving the Way NOAA Delivers Web Services  
 Michael J. Brewer, NCDC  
 Mark Svoboda, NDMC

### Drought Impact Reporter

National Drought Mitigation Center

View Drought Impacts | Add A Drought Impact | Time-Lapse Animation | About | Help | User Login

**Map Options**  
 Impact Categories:  
 Agriculture  
 Water/Energy  
 Environment  
 Fire  
 Social  
 Other

Source: All Sources  
 Time Period: Last Month

**Legend**  
 No reported impacts  
 1 - 5 reported impacts  
 6 - 10 reported impacts  
 11 - 15 reported impacts  
 16 - 20 reported impacts  
 21 - 25 reported impacts

The USDP works with federal, state, and local partners to provide access to a suite of drought monitoring, forecasting, and impacts information.

### WaterMonitor.gov

[View Full Image \(Example\)](#)

USGS

### Westside SNOTEL Current Snow Water Equivalent (SWE) % of Normal

Feb 16, 2010

Current Snow Water Equivalent (SWE) Basin-wide Percent of 1971-2000 Normal

- Unavailable
- <50%
- 50 - 69%
- 70 - 89%
- 90 - 109%
- 110 - 129%
- 130 - 149%
- ≥ 150%

USDA NRCS

## NIDIS U.S. Drought Portal

www.drought.gov

HOME | WHAT IS NIDIS? | CURRENT DROUGHT | FORECASTING | IMPACTS | PLANNING | EDUCATION | RESEARCH | RECOVERY | LOCAL FORECAST: City, State or Zip

#### Area Drought Information

Select State... >> Go updated!

Select Region... >> Go

#### Maps & Tools

- Map Viewer
- Flex Prototype
- Flex Prototype (popup)
- SE Pilot Flex Prototype
- GIS Resources
- Geodata Portal
- Drought Monitor Graphics
- Data Visualizations

#### Events & Announcements

- Remote Sensing Workshop - February 2008 (Updated Summary)
- National Hydrologic Warning Council - May 2009
- Wildfire: National Seasonal Assessment Workshop - February 2009
- Monitoring Gaps Assessment Workshop - December 2008
- Climate Reference Network Soil Moisture Meeting - March 2009

[View Archive](#) | [Portal Release Notes](#)

#### Drought In The News

- Amazon hit by climate chaos of floods, drought - USATODAY.com

[View Archive](#) | [RSS](#)

#### Featured Products

[Where are Drought Conditions Now?](#) | [How is the Drought Affecting Me?](#) | [Will the Drought Continue?](#)

### U.S. Drought Monitor

February 9, 2010  
Valid 7 a.m. EST

Intensity:  
 D0 Abnormally Dry  
 D1 Drought - Moderate  
 D2 Drought - Severe  
 D3 Drought - Extreme  
 D4 Drought - Exceptional

Drought Impact Types:  
 A = Agricultural (crops, pastures, grasslands)  
 H = Hydrological (water)

Released Thursday, February 11, 2010  
 Author: Brian Fuchs, National Drought Mitigation Center  
<http://drought.unl.edu/dm>

#### Drought Conditions

% Area for U.S., including, AK, HI & PR (As of 2.9.2010)  
 Info Source: National Drought Mitigation Center

Drought Classifications | View Time Series

#### Drought Information Statements - flex

Click on a highlighted area to view the current NWS Drought Information Statement or Click Here to select from a list

[View larger map](#)

#### US Streamflow Drought Conditions

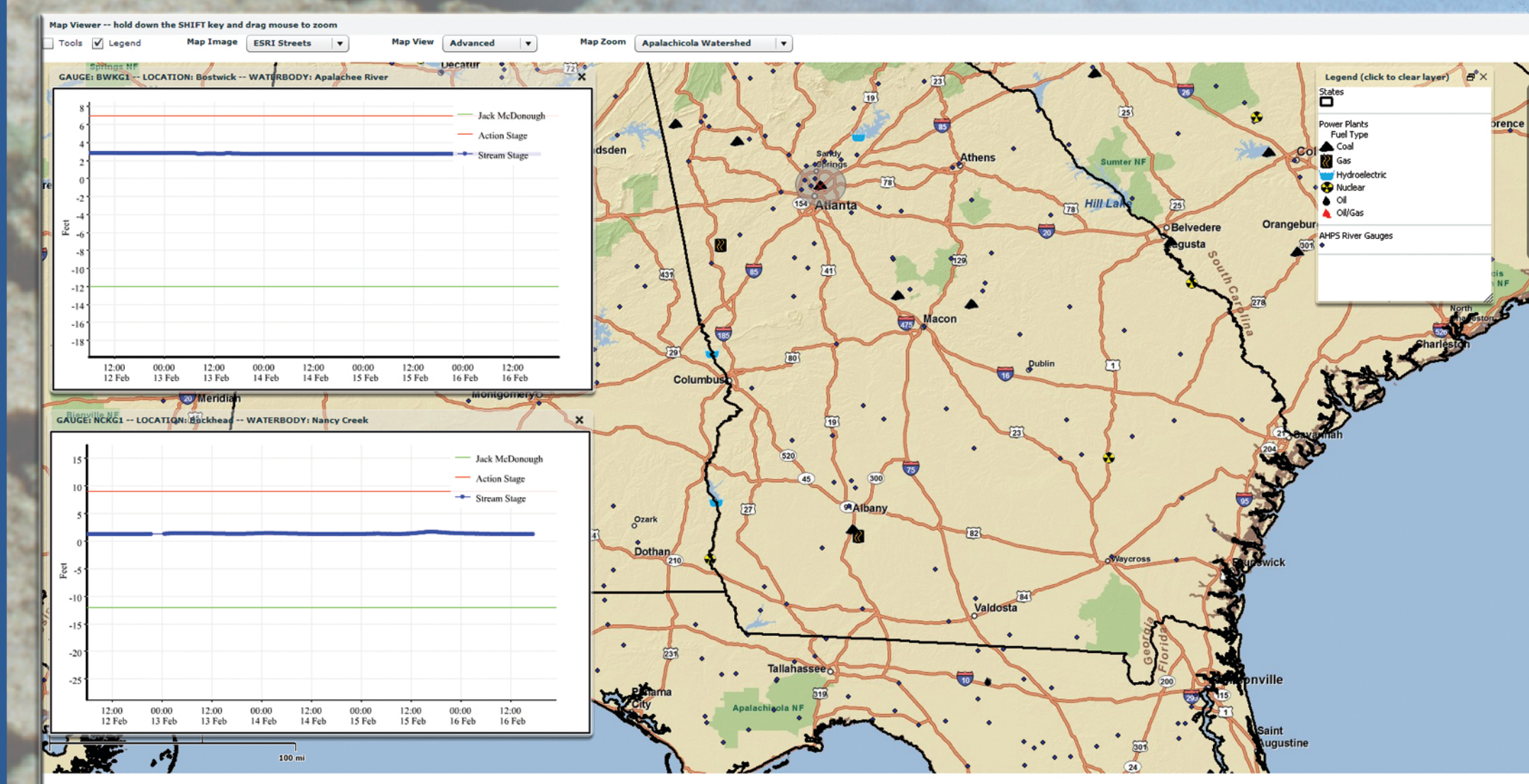
[7-day Streamflow - USGS](#)

Gadgets powered by Google

Contact Us | Site Disclaimers | Privacy Policy | Accessibility | FOIA



The USDP provides access to NOAA data and information through compelling visual mapping and graphical displays, and standard data files, as well as serves as a prototype for improved delivery of climate information for decision support.



The USDP and NIDIS are working with the United Nations, the Group on Earth Observations, and international partners to put together a prototype Global Integrated Drought Information clearinghouse.

The U.S. Drought Portal (USDP) provides convenient dashboard-like access to drought services highlighting what are drought conditions now, how will they change in the future, and how will they impact me? The USDP also provides access to drought planning, mitigation, and recovery information from across the country.

